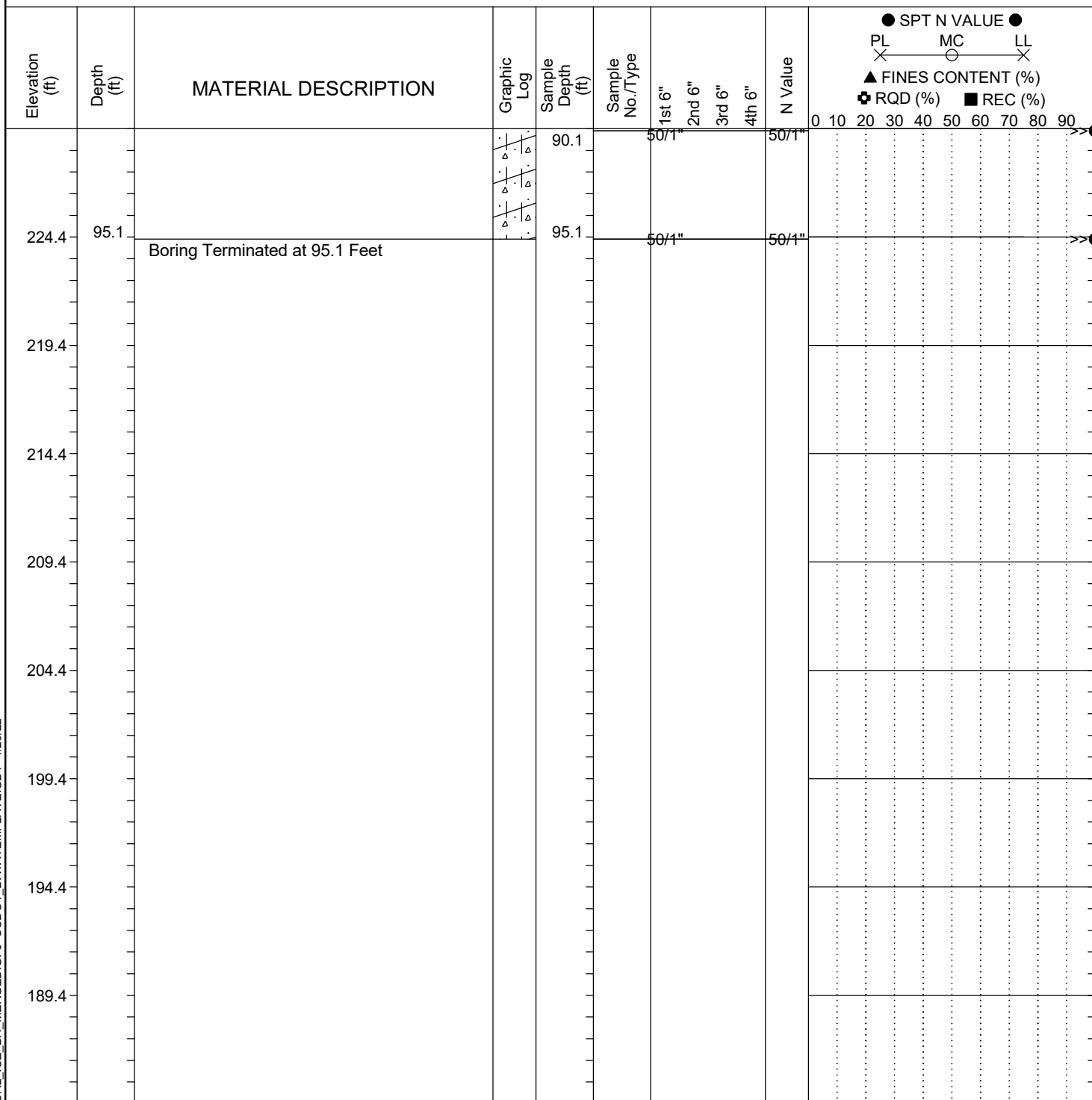


| | | | | | | | | |
|-------------------------------|--|--|--|-------------------------|--|--------------------------|------------------------|--|
| Project ID: P039719 | | | | County: Richland | | Boring No.: G-126 | | |
| Site Description: | | Carolina Crossroads Phase 2 - Bridge 42B | | | | | Route: Broad River Rd. | |
| Eng./Geo.: C. McIlroy | | Boring Location: 204+20 | | Offset: 96 RT | | Alignment: I20CL | | |
| Elev.: 319.4 ft | | Latitude: 34.03931253 | | Longitude: -81.09321267 | | Date Started: 3/2/2022 | | |
| Total Depth: 95.1 ft | | Soil Depth: 95.1 ft | | Core Depth: N/A ft | | Date Completed: 3/3/2022 | | |
| Bore Hole Diameter (in): 2.25 | | Sampler Configuration | | Liner Required: Y (N) | | Liner Used: Y (N) | | |
| Drill Machine: D-50 #435 | | Drill Method: Casing w/ Adv | | Hammer Type: Automatic | | Energy Ratio: 84.4% | | |
| Core Size: N/A | | Driller: M. Morgan | | Groundwater: TOB N/A | | 24HR 31.7 ft | | |



LEGEND

| SAMPLER TYPE | | DRILLING METHOD | |
|-------------------------|------------------------|--------------------------------|------------------|
| SS - Split Spoon | NQ - Rock Core, 1-7/8" | HSA - Hollow Stem Auger | RW - Rotary Wash |
| UD - Undisturbed Sample | CU - Cuttings | CFA - Continuous Flight Augers | RC - Rock Core |
| AWG - Rock Core, 1-1/8" | CT - Continuous Tube | DC - Driving Casing | |